

WA East G02

Washington East SC

Spokane, WA

G02 total strength=1637

attack=19.78 defense=16.72

fall league = PSPL Super League 1 East U15

spr league = Win PSPL WSPL 1 (02) U15

notes= Robles 2015-6

alt names used:

WASHINGTON EAST SC G02 ROBLES (WA)

WASHINGTON EAST SCG02 ROBLES

Washington East SC G02 Robles

Washington East SC G'02

Washington East SC G02 Robles

WASHINGTON EAST SC G02 ROBLES

Venues played:

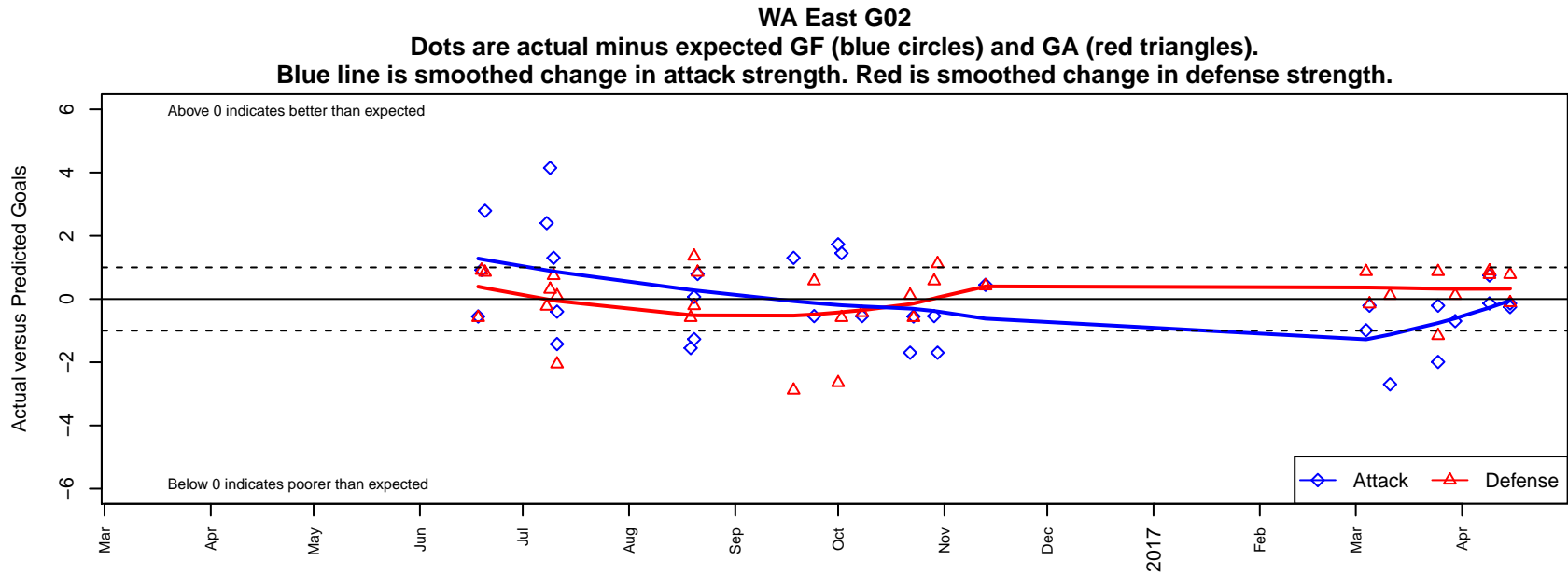
2016 US Club Regionals 2002

2016 Nike Crossfire Challenge Silver Group U1

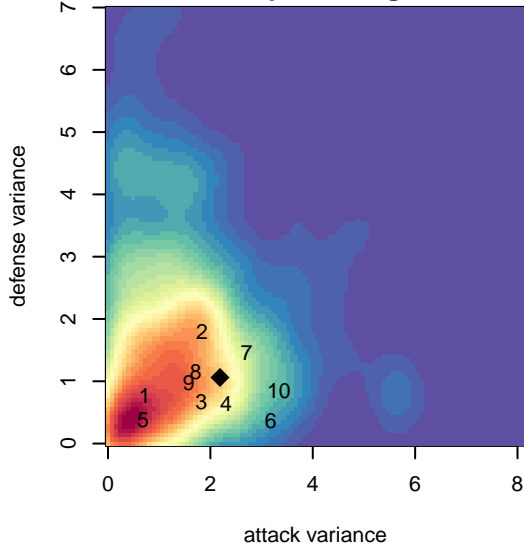
2016 NWCL 02

2016 PSPL Super League 1 East U15

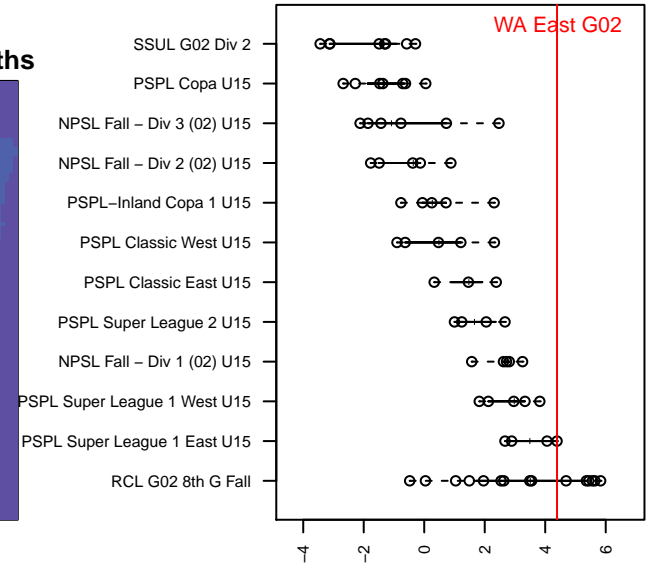
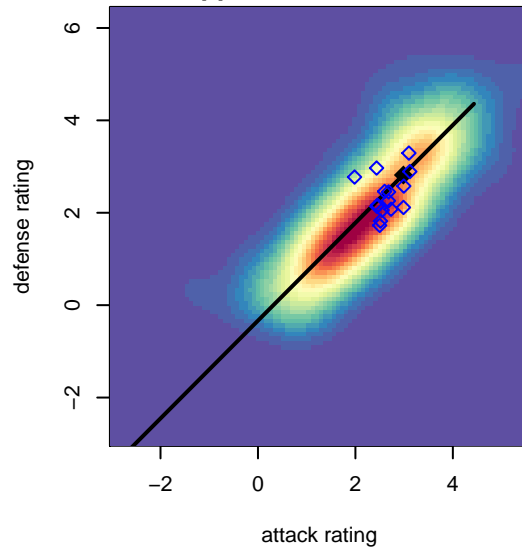
2016 Win PSPL WSPL 1 (02) U15



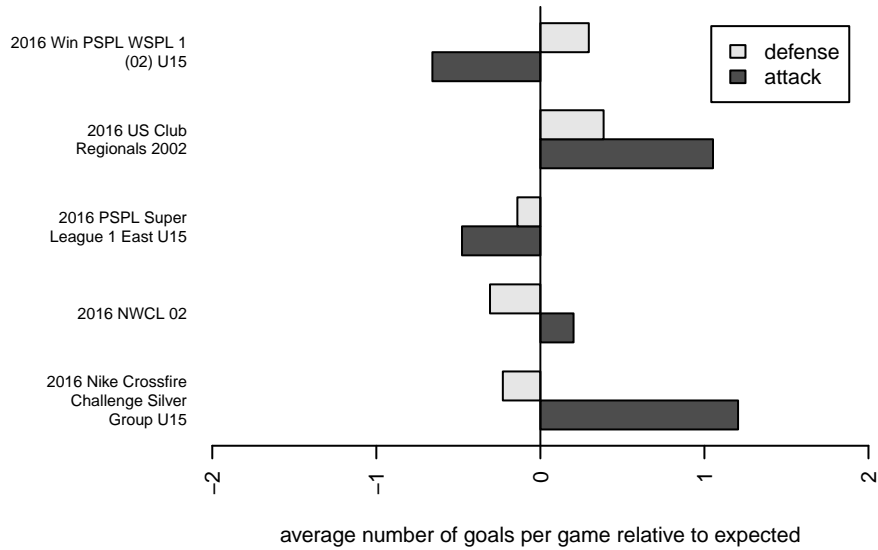
**attack and defense variance (black dot)
relative to other teams
and top 10 in region**



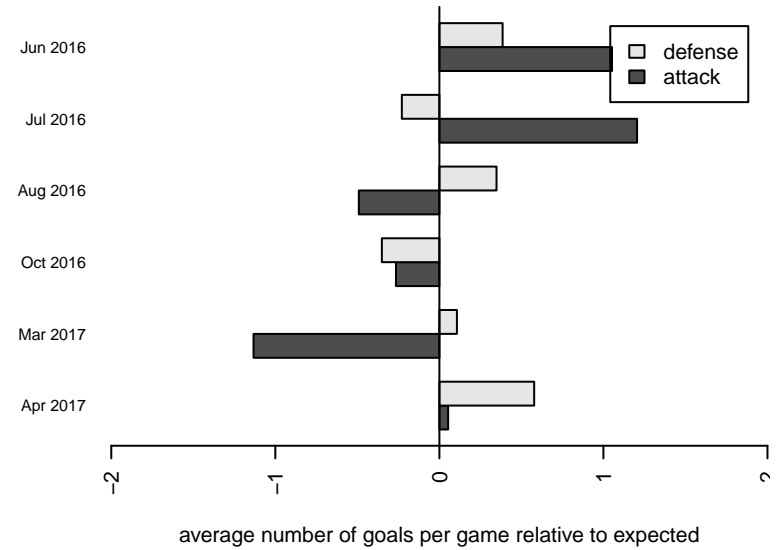
**attack and defense rating
relative to others at age
and all opponents in last 13 months**



Performance relative to 13 month average



Performance relative to 13 month average



date	home		away		venue	pred.home	pred.away
2017-04-15	MRFC Blue G02	1	WA East G02	3	2016 Win PSPL WSPL 1 (02) U15	0.88	3.25
2017-04-15	MVP Marauders Navy G02	0	WA East G02	1	2016 Win PSPL WSPL 1 (02) U15	0.77	1.14
2017-04-09	WA East G02	4	MRFC Blue G02	0	2016 Win PSPL WSPL 1 (02) U15	3.25	0.88
2017-04-09	WA East G02	1	MVP Marauders Navy G02	0	2016 Win PSPL WSPL 1 (02) U15	1.14	0.77
2017-03-30	WA East G02	2	Spokane Foxes Premier G02	1	2016 Win PSPL WSPL 1 (02) U15	2.70	1.11
2017-03-25	ISC Gunners A G02	2	WA East G02	2	2016 Win PSPL WSPL 1 (02) U15	0.84	2.21
2017-03-25	LWPFC White Stingrays G02	0	WA East G02	2	2016 Win PSPL WSPL 1 (02) U15	0.86	3.99
2017-03-11	Spokane Foxes Premier G02	1	WA East G02	0	2016 Win PSPL WSPL 1 (02) U15	1.11	2.70
2017-03-05	WA East G02	2	ISC Gunners A G02	1	2016 Win PSPL WSPL 1 (02) U15	2.21	0.84
2017-03-04	WA East G02	3	LWPFC White Stingrays G02	0	2016 Win PSPL WSPL 1 (02) U15	3.99	0.86
2016-11-13	WA East G02	2	Wenatchee FC Black G02	1	2016 PSPL Super League 1 East U15	1.55	1.41
2016-10-30	WA East G02	1	Spokane Foxes Premier G02	0	2016 PSPL Super League 1 East U15	2.70	1.11
2016-10-29	WA East G02	1	Breakers Black Andersson G02	0	2016 PSPL Super League 1 East U15	1.54	0.57
2016-10-23	Wenatchee FC Black G02	2	WA East G02	1	2016 PSPL Super League 1 East U15	1.41	1.55
2016-10-22	Spokane Foxes Premier G02	1	WA East G02	1	2016 PSPL Super League 1 East U15	1.11	2.70
2016-10-08	WA East G02	1	Breakers Black Andersson G02	1	2016 PSPL Super League 1 East U15	1.54	0.57
2016-10-02	Wenatchee FC Black G02	2	WA East G02	3	2016 NWCL 02	1.41	1.55
2016-10-01	NW United Black G02	4	WA East G02	3	2016 NWCL 02	1.35	1.27
2016-09-24	Breakers Black Andersson G02	0	WA East G02	1	2016 PSPL Super League 1 East U15	0.57	1.54
2016-09-18	Spokane Foxes Premier G02	4	WA East G02	4	2016 PSPL Super League 1 East U15	1.11	2.70
2016-08-21	ISC Gunners A G02	0	WA East G02	3	2016 NWCL 02	0.84	2.21
2016-08-20	NW United Black G02	0	WA East G02	0	2016 NWCL 02	1.35	1.27
2016-08-20	WA East G02	1	Idaho Rush Premier G02	2	2016 NWCL 02	0.93	1.79
2016-08-19	Wenatchee FC Black G02	2	WA East G02	0	2016 NWCL 02	1.41	1.55
2016-07-11	FC Portland Navy G02	1	WA East G02	2	2016 Nike Crossfire Challenge Silver Gro	1.10	2.40
2016-07-11	Spokane Sounders B G02	3	WA East G02	1	2016 Nike Crossfire Challenge Silver Gro	0.94	2.42
2016-07-10	NEU White G02	0	WA East G02	5	2016 Nike Crossfire Challenge Silver Gro	0.74	3.70
2016-07-09	Crossfire Premier B G02	1	WA East G02	7	2016 Nike Crossfire Challenge Silver Gro	1.30	2.85

date	home		away		venue	pred.home	pred.away
2016-07-08	WA East G02	5	Rocky Mountain FC G02	1	2016 Nike Crossfire Challenge Silver Gro	2.60	0.77
2016-06-20	WA East G02	5	ISC Gunners A G02	0	2016 US Club Regionals 2002	2.21	0.84
2016-06-19	GS Surf B G02	0	WA East G02	3	2016 US Club Regionals 2002	0.90	2.08
2016-06-18	WA East G02	1	Wenatchee FC Black G02	2	2016 US Club Regionals 2002	1.55	1.41